



GHANA STATISTICAL SERVICE (GSS)
Statistics for Development and Progress

Statistical Bulletin

PRODUCER PRICE INDEX (PPI)
December 2013

Ghana Statistical Service (GSS)

Statistical Bulletin

PRODUCER PRICE INDEX (PPI)

DECEMBER, 2013

Date: January 22, 2014

For technical enquiries contact:

Ghana Statistical Service (GSS), Head Office

Industrial Statistics Section or Economic Statistics Division

Tel No: +233-302-664382

Email: industrialstats@statsghana.gov.gh/econsstats@statsghana.gov.gh

Producer Price Index (PPI)

December 2013

CONTENTS

HIGHLIGHTS FOR DECEMBER 2013	2
Table 1: Producer Price Index for December 2012 - December 2013	4
Table 2: Producer Price Index (Sep.2006=100) by sectors for December 2012 - December 2013	5
Table 3: Producer Price Index: Yearly Change Rates by Sector for December 2012 - December 2013 (%)	6
Table 4: Producer Price Index: Monthly Change Rates by Sector for December 2012 - December 2013 (%)	7
Table 5: Mining And Quarrying: Producer Price Index (Sept 2006=100) December 2012 - December 2013	8
Table 6: Mining and Quarrying: Yearly Change Rates for December 2012- December 2013(%)	9
Table 7: Mining and Quarrying: Monthly Change Rates for December 2012 - December 2013 (%)	10
Table 8: Manufacturing Producer Price Index (Sept 2006=100) for December 2012 - December 2013	11
Table 9: Manufacturing: Yearly Change Rates for December 2012 - December 2013 (%)	17
Table 10: Manufacturing: Monthly Change Rates for December 2012 - December 2013 (%)	23
Table 11: Utilities: Producer Price Index (Sept 2006=100) for December 2012 -December 2013	28
Table 12: Utilities: Yearly Change Rates for December 2012 - December 2013 (%)	29
Table 13: Utilities: Monthly Change Rates for December 2012 - December 2013 (%)	30

HIGHLIGHTS FOR DECEMBER 2013

Producer Price Inflation Rate Increased to 15.3% in December 2013

The Producer Price Index (PPI) measures the average change over time in the prices received by domestic producers for the production of their goods and services. The PPI for Ghana reports the producer price indices with reference to September 2006, the base period.

This release shows the producer price changes since September 2006, as well as the annual (year-on-year) and monthly inflation rates, for all industry and three major sub-sectors of industry (Mining and Quarrying, Manufacturing, and Utilities) for the last twelve months. The figures for the month of December 2013 are provisional, and are subject to revision when additional data become available. All other indicators are final.

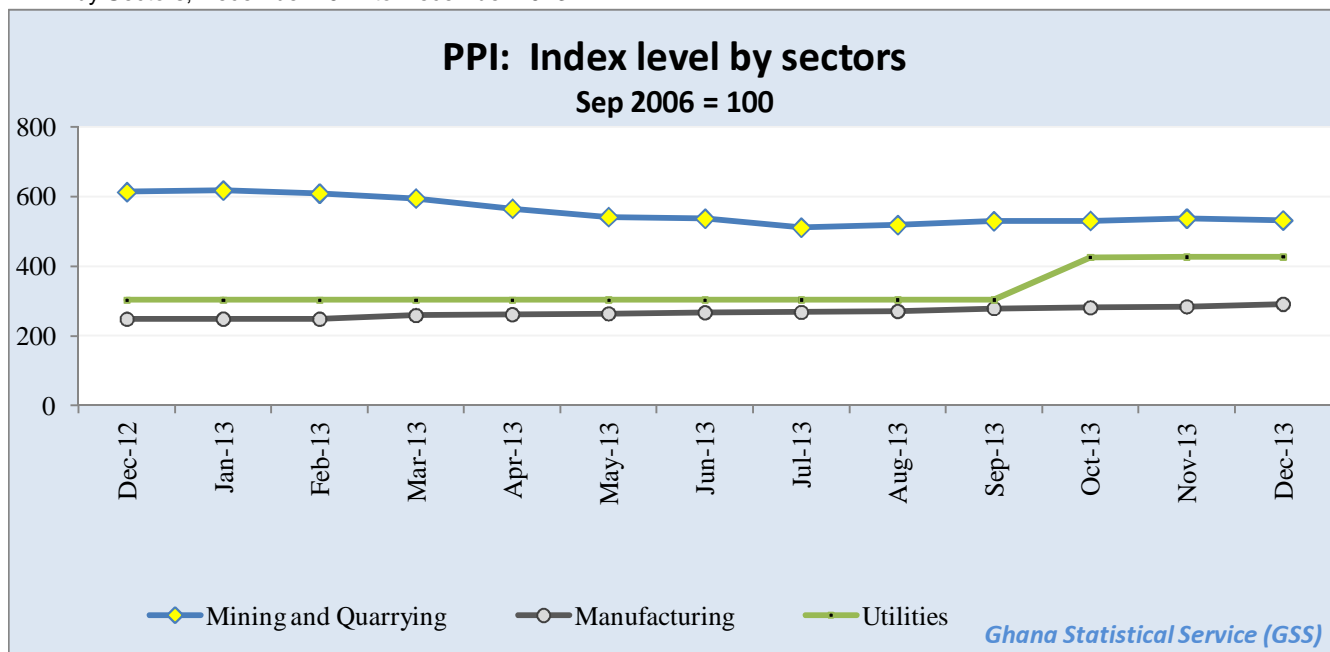
The Producer Price Inflation increased by 15.3 percent between December 2012 and December 2013 (year-on-year), representing an increase of 2.3 percentage points in producer inflation relative to the rate recorded in November 2013 (13.0%). The month-on-month change in producer prices between November 2013 and December 2013 was 1.6 percent.

In December 2013, the producer price inflation in the Mining and Quarrying subsector increased by 1.7 percentage points over the November 2013 rate of -14.9 percent, to record -13.2 percent. Manufacturing, which constitutes more than two-thirds of total industry, increased by 2.9 percentage points to record 17.4 percent. The rate for the Utilities sub-sector rose slightly by 0.2 percentage points relative to November 2013 (40.8%) to record 41.0 percent in December 2013.

During the 12-month period (December 2012 to December 2013), the highest year-on-year inflation rate of 17.1 percent for all industry was recorded in December 2012. The producer price inflation fluctuated from December 2012 until March 2013 when it declined continuously over a five-month period to record the lowest rate of 4.7 percent in August 2013. In September 2013, however, the rate inched up to record 5.8 percent. Subsequently, the rate rose continuously to record 11.6 percent in October 2013, 13.0 percent in November 2013 and 15.3 percent in December 2013.

During the month of December 2013, five out of the sixteen major groups in the manufacturing sub-sector recorded inflation rates higher than the sector average of 17.4 percent (Fig. 2). Manufacture of machinery and equipment n.e.c. recorded the highest inflation rate of 76.0 percent whilst producer prices in the manufacture of electrical machinery and apparatus n.e.c. recorded the lowest inflation rate of -5.5 percent over the one year period.

PPI by Sectors; December 2012 to December 2013



Selected records:

All items PPI: Annual rate was 15.3 percent; as compared to 13.0 percent last month.

Petroleum Price Index: Annual rate 35.7 percent; as compared to 30.1 percent last month.

Manufacture of machinery and equipment n.e.c.: Annual rate was 76.0 percent for December 2013, the same as last month.

Manufacture of furniture; manufacturing n.e.c.: Annual rate was 29.6 percent for December as compared to 31.6 percent last month.

Manufacture of coke, refined petroleum products etc.: Annual rate was 35.7 percent for December 2013, as compare to 30.1 percent in November 2013.

Electricity and Water Supply: Annual rate is 41.0 percent; as compare to 40.8 percent in November 2013.

More detailed time series data is posted on the GSS website [www.statsghana.gov.gh].

The next release date is 26th February, 2014

Table 1: Producer Price Index for December 2012 - December 2013

Year / Month	Index level	Monthly	Yearly
	Sept 2006=100	Change Rate (%)	
2009 Average	172.5	2.1	15.4
2010 Average	204.7	1.4	18.8
2011 Average	242.6	1.1	18.7
2012 Average	284.2	1.3	17.1
2013 Average	310.7	1.2	9.3
December-12	295.2	-0.4	17.1
January-13	295.7	0.2	11.5
February-13	295.0	-0.3	9.1
March-13	302.5	2.5	10.6
April-13	302.1	-0.1	10.2
May-13	303.9	0.6	9.0
June-13	303.9	0.0	7.0
July-13	302.4	-0.5	5.0
August-13	305.4	1.0	4.7
September-13	312.5	2.3	5.8
October-13	332.0	6.2	11.6
November-13	335.1	0.9	13.0
December-13	p 340.4	p 1.6	p 15.3

p: provisional

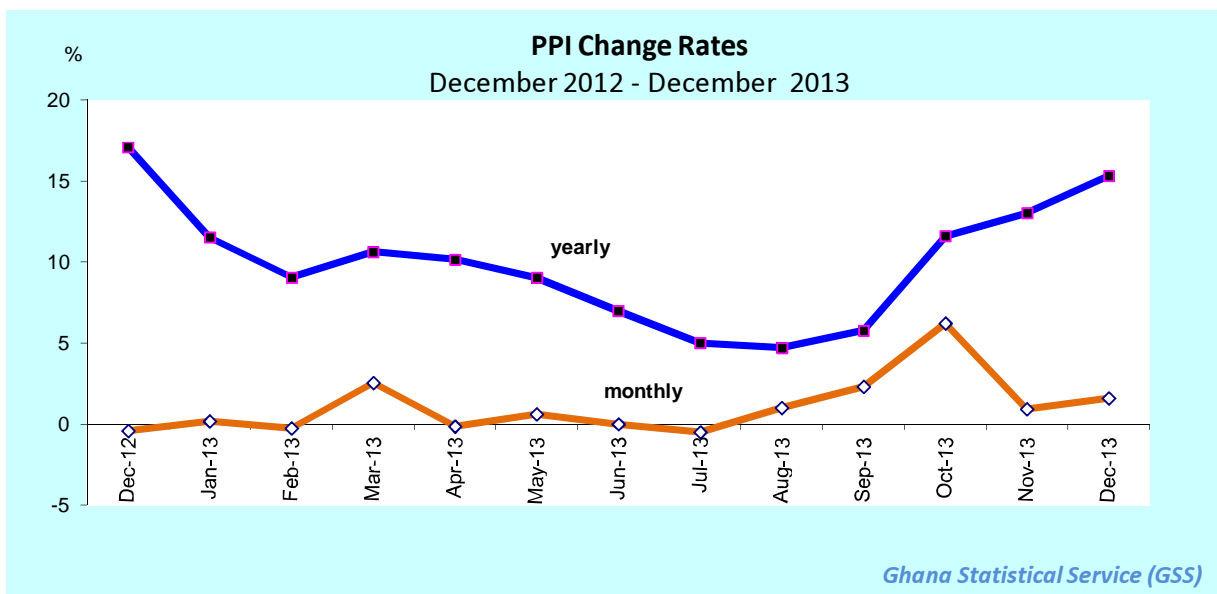


Table 2: Producer Price Index (Sep.2006=100) by sectors for December 2012 - December 2013

Year / Month	Mining and Quarrying	Manufacturing	Utilities	ALL INDUSTRY
ISIC	C	D	E	C+D+E
weight	13.97	69.75	16.28	100.00
2009 average	282.2	156.6	159.4	172.5
2010 average	349.7	176.3	226.0	204.7
2011 average	467.0	200.5	281.3	242.6
2012 average	584.2	237.7	301.9	284.2
2013 average	551.9	268.7	334.3	310.7
December-2012	612.9	248.3	303.1	295.2
January-2013	617.6	248.5	303.2	295.7
February-2013	608.8	248.4	303.2	295.0
March-2013	594.7	259.1	303.2	302.5
April-2013	565.3	261.6	303.3	302.1
May-2013	541.3	264.2	303.5	302.0
June-2013	536.8	267.1	303.7	303.9
July-2013	511.2	268.1	303.7	302.4
August-2013	518.5	271.2	303.7	305.4
September-2013	529.6	279.1	303.8	312.5
October-2013	530.5	281.3	426.1	332.0
November-2013	537.0	284.3	426.8	335.1
December-2013	p 531.9	p 291.4	p 427.3	p 340.4

p: provisional

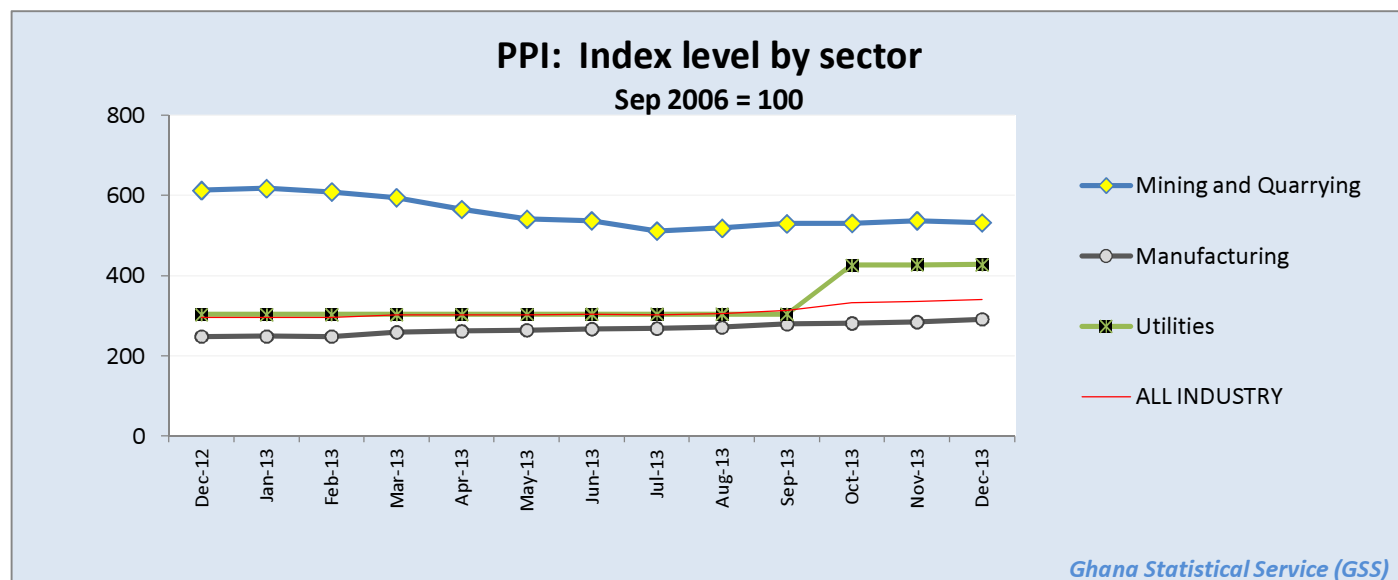


Table 3: Producer Price Index: Yearly Change Rates by Sector for December 2012 - December 2013 (%)

Year / Month	Mining and Quarrying	Manufacturing	Utilities	ALL INDUSTRY
<i>ISIC</i>	<i>C</i>	<i>D</i>	<i>E</i>	<i>C+D+E</i>
<i>weight</i>	13.97	69.75	16.28	100.00
2009 average	47.3	12.7	1.4	15.4
2010 average	24.3	13.3	41.7	18.8
2011 average	33.7	13.7	32.7	18.7
2012 average	25.5	18.5	7.4	17.1
2013 average	-4.8	13.0	10.7	9.3
December-2012	26.8	19.3	1.5	17.1
January-2013	18.5	12.8	1.2	11.5
February-2013	7.8	11.4	1.1	9.1
March-2013	6.4	14.1	1.0	10.6
April-2013	2.4	14.4	1.0	10.2
May-2013	-1.9	12.8	0.5	8.3
June-2013	-1.4	10.6	0.6	7.0
July-2013	-13.1	10.9	0.2	5.0
August-2013	-14.1	10.8	0.2	4.7
September-2013	-16.9	13.3	0.2	5.8
October-2013	-17.7	13.3	40.5	11.6
November-2013	-14.9	14.5	40.8	13.0
December-2013	p -13.2	p 17.4	p 41.0	p 15.3

p: provisional

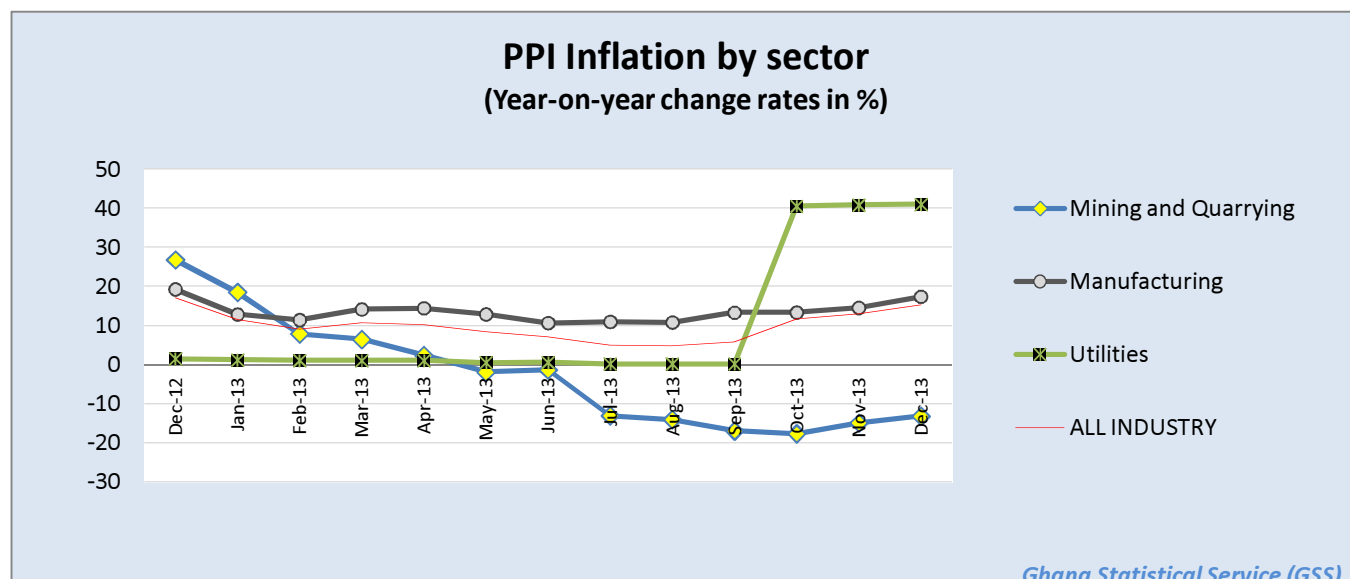


Table 4: Producer Price Index: Monthly Change Rates by Sector for December 2012 - December 2013 (%)

Year / Month	Mining and Quarrying	Manufacturing	Utilities	ALL INDUSTRY
<i>ISIC</i>	<i>C</i>	<i>D</i>	<i>E</i>	<i>C+D+E</i>
<i>weight</i>	13.97	69.75	16.28	100.00
2009 average	4.3	2.1	0.1	2.1
2010 average	1.9	0.4	6.0	1.4
2011 average	1.5	1.2	0.7	1.1
2012 average	2.1	1.5	0.1	1.3
2013 average	-1.1	1.4	3.4	1.2
December-2012	-2.9	0.0	0.0	-0.4
January-2013	0.8	0.1	0.0	0.2
February-2013	-1.4	0.0	0.0	-0.3
March-2013	-2.3	4.3	0.0	2.5
April-2013	-4.9	0.9	0.0	-0.1
May-2013	-4.3	1.0	0.0	0.0
June-2013	-0.8	1.1	0.1	0.6
July-2013	-4.8	0.4	0.0	-0.5
August-2013	1.4	1.1	0.0	1.0
September-2013	2.1	2.9	0.0	2.3
October-2013	0.2	0.8	40.3	6.2
November-2013	1.2	1.1	0.2	0.9
December-2013	p -0.9	p 2.5	p 0.1	p 1.6

p: provisional

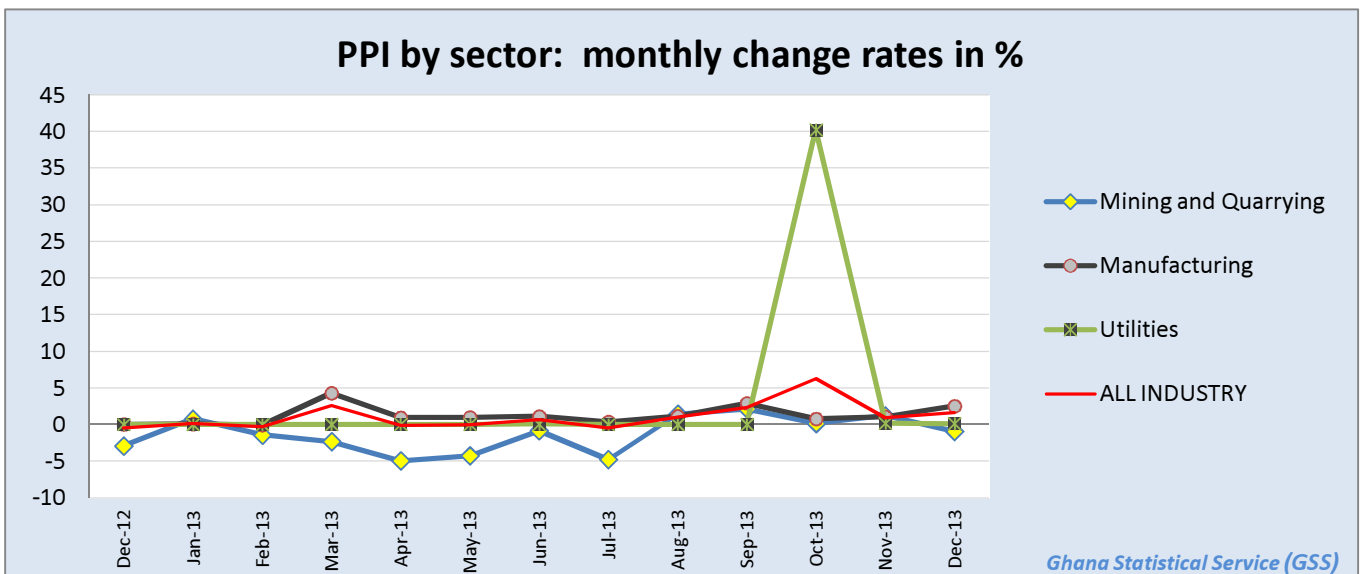


Table 5: Mining And Quarrying: Producer Price Index (Sept 2006=100) December 2012 - December 2013

Year / Month	Mining and Quarrying	Mining of metal ores	Mining of non-ferrous metal ores	Other mining and quarrying	Quarrying of stone, sand & clay	Mining and quarrying n.e.c.
<i>ISIC</i>	<i>C</i>	<i>C13</i>	<i>C132</i>	<i>C14</i>	<i>C141</i>	<i>C142</i>
<i>weight</i>	100.00	95.01	95.01	4.99	3.42	0.87
2009 average	282.2	292.3	292.3	118.9	114.4	138.3
2010 average	349.7	367.1	367.1	100.8	92.6	157.9
2011 average	467.0	494.9	494.9	107.7	99.1	156.3
2012 average	584.2	618.7	618.7	140.7	138.8	148.4
2013 average	551.9	582.2	582.2	146.1	142.4	161.8
December-2012	612.9	650.2	650.2	141.0	139.2	148.4
January-2013	617.6	654.9	654.9	143.5	139.2	161.8
February-2013	608.8	645.2	645.2	143.5	139.2	161.8
March-2013	594.7	629.1	629.1	146.6	142.9	161.8
April-2013	565.3	596.8	596.8	146.6	143.0	161.8
May-2013	541.3	570.4	570.4	146.6	143.0	161.8
June-2013	536.8	565.5	565.5	146.6	143.0	161.8
July-2013	511.2	537.5	537.5	146.6	143.0	161.8
August-2013	518.5	545.5	545.5	146.6	143.0	161.8
September-2013	529.6	557.6	557.6	146.6	143.0	161.8
October-2013	530.5	558.6	558.6	146.6	143.0	161.8
November-2013	537.0	565.7	565.7	146.6	143.0	161.8
December-2013	p 531.9	p 560.2	p 560.2	p 146.6	p 143.0	p 161.8

p: provisional

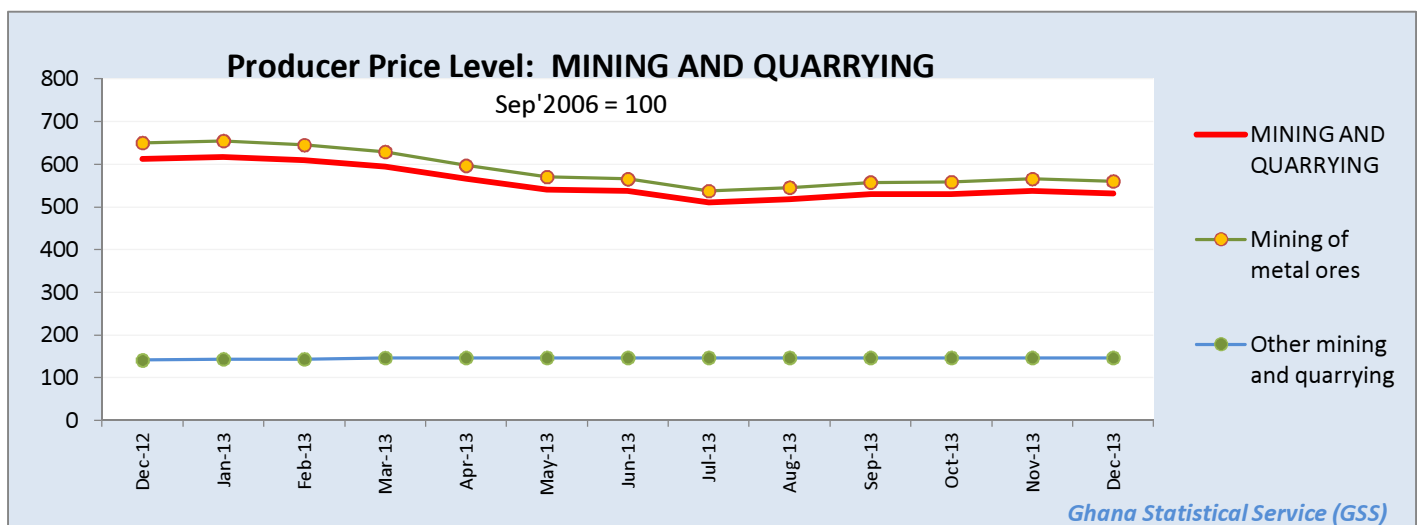


Table 6: Mining and Quarrying: Yearly Change Rates for December 2012- December 2013(%)

Year / Month	Mining and Quarrying	Mining of metal ores	Mining of non-ferrous metal ores	Other mining and quarrying	Quarrying of stone, sand & clay	Mining and quarrying n.e.c.
<i>ISIC</i>	<i>C</i>	<i>C13</i>	<i>C132</i>	<i>C14</i>	<i>C141</i>	<i>C142</i>
<i>weight</i>	100.00	95.01	95.01	4.99	3.42	0.87
2009 average	47.3	49.2	49.2	2.3	8.8	-4.8
2010 average	24.3	26.1	26.1	-15.0	-18.8	14.4
2011 average	33.7	34.9	34.9	6.8	7.0	2.6
2012 average	25.5	25.4	25.4	30.7	40.1	-4.6
2013 average	-4.8	-5.1	-5.1	3.9	2.6	9.0
December-2012	26.8	26.7	26.7	29.1	37.7	0.0
January-2013	18.5	19.1	19.1	2.9	1.4	9.0
February-2013	7.8	8.0	8.0	2.9	1.4	9.0
March-2013	6.4	6.5	6.5	4.4	3.3	9.0
April-2013	2.4	2.3	2.3	4.3	3.1	9.0
May-2013	-1.9	-2.1	-2.1	4.0	2.7	9.0
June-2013	-1.4	-1.6	-1.6	4.0	2.7	9.0
July-2013	-13.1	-13.7	-13.7	4.0	2.7	9.0
August-2013	-14.1	-14.7	-14.7	4.0	2.7	9.0
September-2013	-16.9	-17.7	-17.7	4.0	2.7	9.0
October-2013	-17.7	-18.5	-18.5	4.0	2.7	9.0
November-2013	-14.9	-15.6	-15.6	4.0	2.7	9.0
December-2013	-p 13.2	-p 13.8	-p 13.8	p 4.0	p 2.7	p 9.0

p: provisional

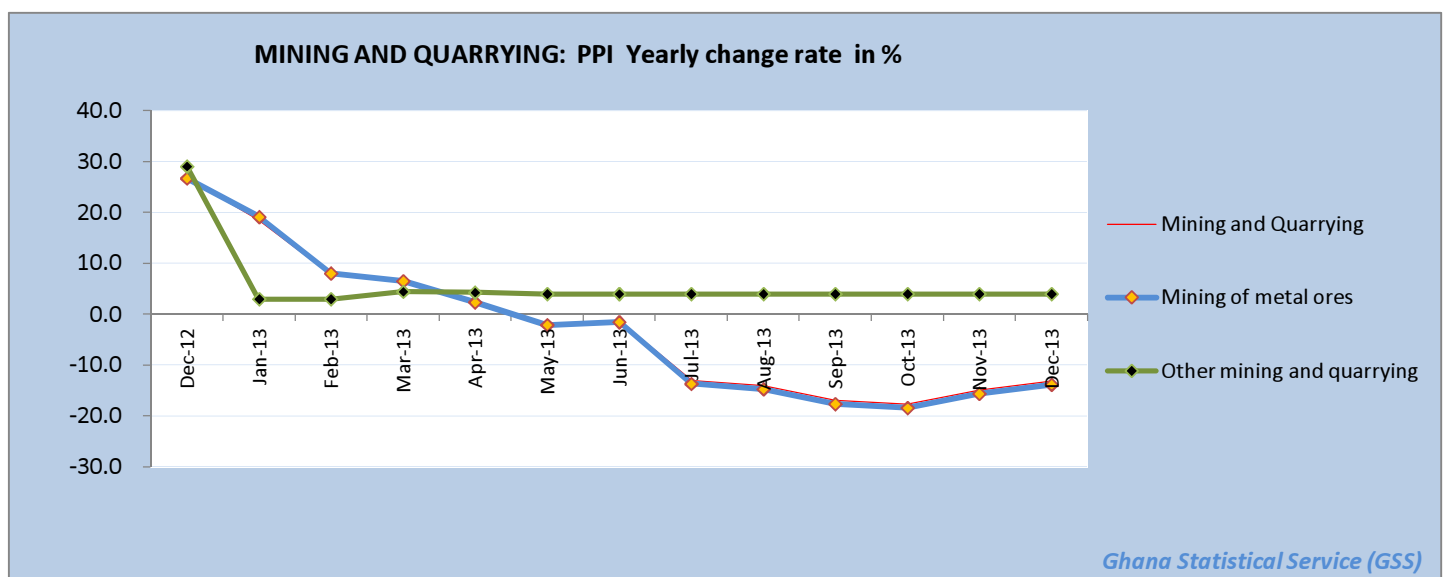


Table 7: Mining and Quarrying: Monthly Change Rates for December 2012 - December 2013 (%)

Year / Month	Mining and Quarrying	Mining of metal ores	Mining of non-ferrous metal ores	Other mining and quarrying	Quarrying of stone, sand & clay	Mining and quarrying n.e.c.
ISIC	C	C13	C132	C14	C141	C142
weight	100.00	95.01	95.01	4.99	3.42	0.87
2009 average	4.3	4.5	4.5	-0.9	-1.0	-0.1
2010 average	1.9	2.0	2.0	-0.5	-0.8	3.4
2011 average	1.5	1.6	1.6	0.5	0.6	-1.9
2012 average	2.1	2.1	2.1	2.4	3.1	0.0
2013 average	-1.1	-1.2	-1.2	0.3	0.2	0.8
December-2012	-2.9	-3.0	-3.0	0.0	0.0	0.0
January-2013	0.8	0.7	0.7	1.8	0.0	9.0
February-2013	-1.4	-1.5	-1.5	0.0	0.0	0.0
March-2013	-2.3	-2.5	-2.5	2.1	2.6	0.0
April-2013	-4.9	-5.1	-5.1	0.1	0.1	0.0
May-2013	-4.3	-4.4	-4.4	0.0	0.0	0.0
June-2013	-0.8	-0.9	-0.9	0.0	0.0	0.0
July-2013	-4.8	-4.9	-4.9	0.0	0.0	0.0
August-2013	1.4	1.5	1.5	0.0	0.0	0.0
September-2013	2.1	2.2	2.2	0.0	0.0	0.0
October-2013	0.2	0.2	0.2	0.0	0.0	0.0
November-2013	1.2	1.3	1.3	0.0	0.0	0.0
December-2013	p -0.9	p -1.0	p -1.0	p 0.0	p 0.0	p 0.0

p: provisional

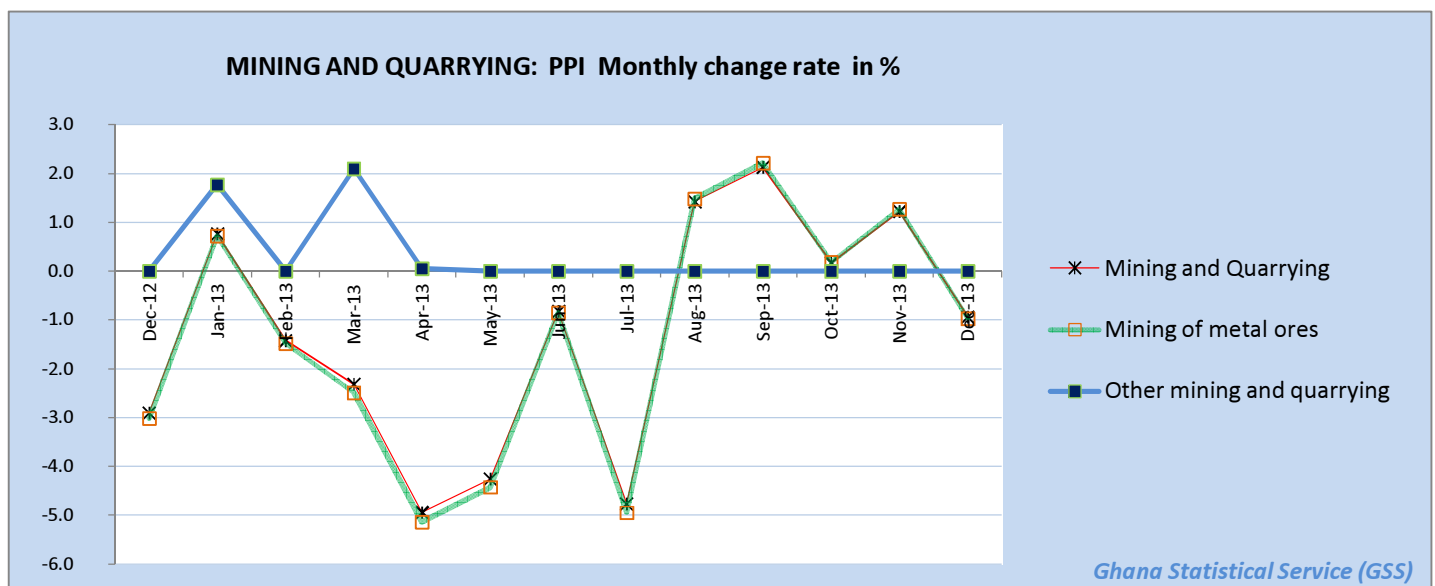


Table 8: Manufacturing Producer Price Index (Sept 2006=100) for December 2012 - December 2013

Year / Month	Manufacturing	Manufacture of food products and beverages	Production, processing, preservation of meat, fish, fruit, vegetables, oils and fats	Manufacture of dairy products	Manufacture of grain mill products, starch products, and prepared animal feeds	Manufacture of other food products	Manufacture of beverages	Manufacture of textiles	Spinning, weaving and finishing of textiles
<i>ISIC</i>	<i>D</i>	<i>D15</i>	<i>D151</i>	<i>D152</i>	<i>D153</i>	<i>D154</i>	<i>D155</i>	<i>D17</i>	<i>D171</i>
<i>weight</i>	100	25.64	4.60	4.31	4.66	4.80	7.27	4.27	4.28
2009 average	156.6	170.3	204.0	144.8	222.9	150.7	160.6	139.1	139.1
2010 average	176.3	198.1	199.6	173.2	232.8	184.7	211.9	150.5	150.5
2011 average	200.5	222.0	225.5	193.2	286.1	216.4	219.5	189.5	189.5
2012 average	237.7	260.3	285.3	216.3	329.3	221.7	278.2	265.5	265.5
2013 average	268.7	293.9	316.6	249.3	343.7	271.2	315.4	304.6	304.6
December-2012	248.3	281.3	277.5	238.4	344.2	252.9	311.2	291.7	291.7
January-2013	248.5	281.7	280.0	238.4	344.2	252.5	311.2	291.7	291.7
February-2013	248.4	281.6	285.7	238.4	341.1	248.2	311.2	291.7	291.7
March-2013	259.1	285.5	292.5	247.6	335.2	247.7	314.1	302.7	302.7
April-2013	261.6	286.7	291.4	247.6	335.2	258.9	314.1	302.7	302.7
May-2013	264.2	288.1	293.7	247.6	335.2	267.7	314.1	302.7	302.7
June-2013	267.1	288.8	298.9	247.6	335.2	272.5	311.2	302.7	302.7
July-2013	268.1	289.0	301.1	247.6	335.2	270.1	311.8	302.7	302.7
August-2013	271.2	289.0	298.8	247.6	335.2	272.9	311.8	302.7	302.7
September-2013	279.1	297.2	348.0	247.6	335.2	285.6	311.8	314.0	314.0
October-2013	281.3	306.0	356.4	247.6	364.1	285.9	324.5	314.0	314.0
November-2013	284.3	308.5	369.3	247.6	364.1	293.7	324.4	314.0	314.0
December-2013	p 291.4	p 324.4	p 383.9	p 286.4	p 364.1	p 298.3	p 324.4	p 314.0	p 314.0

p: provisional

Table 8: Manufacturing Producer Price Index (Sept 2006=100) for December 2012 - December 2013

contd.

Year / Month	Tanning of leather; manu facture of luggage, etc	Manufacture of footwear	Manufacture of wood an of articles of straw etc.	Sawmilling and planing of wood	Manufacture of products of wood, cork, straw etc.	Manufacture of paper and paper products	Manufacture of paper and paper products	Publishing, printing and reproduction of rec. media	Publishing	Printing and service activities ...
<i>ISIC</i>	D19	<i>D192</i>	D20	<i>D201</i>	<i>D202</i>	D21	<i>D210</i>	D22	<i>D221</i>	<i>D222</i>
<i>weight</i>	0.12	<i>0.12</i>	9.03	<i>4.94</i>	<i>4.10</i>	0.62	<i>0.62</i>	1.14	<i>0.40</i>	<i>0.74</i>
2009 average	196.9	196.9	193.6	223.1	136.1	136.9	136.9	195.3	185.6	202.8
2010 average	218.0	218.0	183.2	193.3	157.2	153.0	153.0	232.0	243.2	225.9
2011 average	220.2	220.2	193.7	197.8	183.6	196.7	196.7	283.4	322.7	264.3
2012 average	240.7	240.7	205.4	207.4	200.0	199.3	199.3	369.9	423.5	344.7
2013 average	279.3	279.3	208.2	205.3	216.6	228.0	228.0	442.4	510.5	409.8
December-2012	266.6	266.6	205.8	205.4	206.7	203.5	203.5	415.2	509.5	371.3
January-2013	270.0	270.0	206.8	205.4	210.5	203.5	203.5	415.2	509.5	371.3
February-2013	261.2	261.2	206.3	205.4	208.5	203.5	203.5	415.2	509.5	371.3
March-2013	271.4	271.4	207.5	205.7	212.5	218.6	218.6	431.9	509.5	394.6
April-2013	274.6	274.6	207.7	205.9	212.6	224.2	224.2	431.9	509.5	394.6
May-2013	273.3	273.3	207.8	205.1	215.5	224.2	224.2	431.9	509.5	394.6
June-2013	278.1	278.1	208.2	205.1	217.0	241.1	241.1	431.9	509.5	394.6
July-2013	278.1	278.1	208.3	205.1	217.6	241.1	241.1	435.8	522.8	394.6
August-2013	278.1	278.1	208.4	205.1	218.1	241.1	241.1	435.8	522.8	394.6
September-2013	285.4	285.4	208.5	205.1	218.4	234.6	234.6	445.3	522.8	408.0
October-2013	285.4	285.4	208.7	205.1	219.1	234.7	234.7	478.0	500.0	466.5
November-2013	293.7	293.7	209.2	205.1	221.0	234.9	234.9	478.0	500.0	466.5
December-2013	p 302.3	p 302.3	p 211.0	p 205.1	p 228.6	p 235.0	p 235.0	p 478.0	p 500.0	p 466.5

p: provisional

Table 8: Manufacturing Producer Price Index (Sept 2006=100) for December 2012 - December 2013
contd.

Year / Month	Manufacture of coke, refined petroleum products etc.	Manufacture of refined petroleum products	Manufacture of chemicals and chemical products	Manufacture of basic chemicals	Manufacture of other chemical products	Manufacture of man-made fibres	Manufacture of rubber and plastics products	Manufacture of rubber products	Manufacture of plastics products
<i>ISIC</i>	D23	<i>D232</i>	D24	<i>D241</i>	<i>D242</i>	<i>D243</i>	D25	<i>D251</i>	<i>D252</i>
<i>weight</i>	22.94	22.94	10.15	0.54	9.45	0.16	3.90	0.76	3.14
2009 average	134.2	134.2	150.8	194.6	151.1	109.6	144.4	190.7	135.7
2010 average	160.4	160.4	151.2	227.9	151.1	109.6	154.6	193.5	146.5
2011 average	202.7	202.7	163.2	245.4	163.3	109.6	174.2	252.9	160.2
2012 average	239.0	239.0	183.3	260.9	183.9	109.6	196.9	248.5	186.9
2013 average	283.7	283.7	211.5	270.1	213.1	109.6	219.4	238.3	215.5
December-2012	237.1	237.1	188.2	263.2	189.1	109.6	204.0	239.1	196.8
January-2013	237.0	237.0	188.2	263.2	189.1	109.6	205.1	245.6	196.9
February-2013	237.0	237.0	187.8	263.2	188.5	109.6	205.5	248.1	196.9
March-2013	272.1	272.1	187.4	264.8	188.1	109.6	206.9	250.5	198.2
April-2013	271.4	271.4	195.9	264.8	197.0	109.6	215.7	250.0	208.6
May-2013	270.7	270.7	216.1	264.8	217.9	109.6	213.7	235.9	208.9
June-2013	281.9	281.9	216.1	264.8	217.9	109.6	215.0	235.7	210.6
July-2013	281.9	281.9	216.3	278.7	217.9	109.6	215.4	237.9	210.6
August-2013	296.8	296.8	216.2	275.0	217.9	109.6	213.7	227.7	210.6
September-2013	317.1	317.1	216.2	275.2	217.9	109.6	232.4	226.4	233.8
October-2013	308.5	308.5	222.0	275.5	224.0	109.6	235.7	231.9	236.6
November-2013	308.5	308.5	237.7	275.7	240.3	109.6	236.3	233.3	237.0
December-2013	p 321.7	p 321.7	p 237.7	p 276.0	p 240.3	p 109.6	p 237.1	p 236.4	p 237.2

p: provisional

Table 8: Manufacturing Producer Price Index (Sept 2006=100) for December 2012 - December 2013
contd.

Year / Month	Manufacture of other non-metallic min. products	Manufacture of non-metallic mineral products n.e.c.	Manufacture of basic metals	Manufacture of basic iron and steel	Manufacture of basic precious and non-ferrous metals	Manufacture of fabricated metal products, ...	Manufacture of structural metal products, tanks, reservoirs ...	Manufacture of other fabricated metal products ...	Manufacture of machinery ... n.e.c.	Manufacture of special-purpose machinery
<i>ISIC</i>	D26	<i>D269</i>	D27	<i>D271</i>	<i>D272</i>	D28	<i>D281</i>	<i>D289</i>	D29	<i>D292</i>
<i>weight</i>	8.20	8.20	5.02	2.02	2.65	3.70	1.55	2.15	0.42	0.42
2009 average	168.7	168.7	148.2	178.2	128.8	224.3	217.4	230.4	216.1	216.1
2010 average	177.9	177.9	161.0	187.6	145.4	262.0	264.8	260.9	278.3	278.3
2011 average	185.0	185.0	179.5	232.4	152.2	266.8	268.7	265.4	347.4	347.4
2012 average	246.6	246.6	205.0	259.9	171.3	315.4	333.8	301.9	384.3	384.3
2013 average	266.5	266.5	214.9	266.1	182.7	350.8	376.1	333.5	530.2	530.2
December-2012	263.6	263.6	214.0	260.0	184.5	337.3	354.8	325.2	384.3	384.3
January-2013	263.6	263.6	214.1	260.1	184.7	338.1	354.8	326.5	384.3	384.3
February-2013	263.4	263.4	214.2	260.1	184.8	338.1	354.3	326.8	384.3	384.3
March-2013	263.8	263.8	213.2	265.2	180.5	336.0	354.4	323.1	384.3	384.3
April-2013	266.7	266.7	213.5	265.2	180.9	340.9	361.6	326.6	384.3	384.3
May-2013	266.9	266.9	213.8	265.3	181.4	340.3	360.3	326.4	384.3	384.3
June-2013	267.0	267.0	214.4	265.3	182.3	340.6	359.6	327.4	384.3	384.3
July-2013	267.9	267.9	212.6	262.4	181.1	353.4	390.9	328.5	676.2	676.2
August-2013	265.7	265.7	215.1	269.4	181.2	353.6	390.9	328.8	676.2	676.2
September-2013	265.7	265.7	215.2	269.4	181.4	360.1	395.3	336.4	676.2	676.2
October-2013	267.9	267.9	216.0	269.7	182.4	367.8	397.1	347.8	676.2	676.2
November-2013	269.7	269.7	217.8	270.1	184.8	368.2	397.1	348.5	676.2	676.2
December-2013	p 269.7	p 269.7	p 219.0	p 270.5	p 186.4	p 372.3	p 397.1	p 355.2	p 676.2	p 676.2

p: provisional

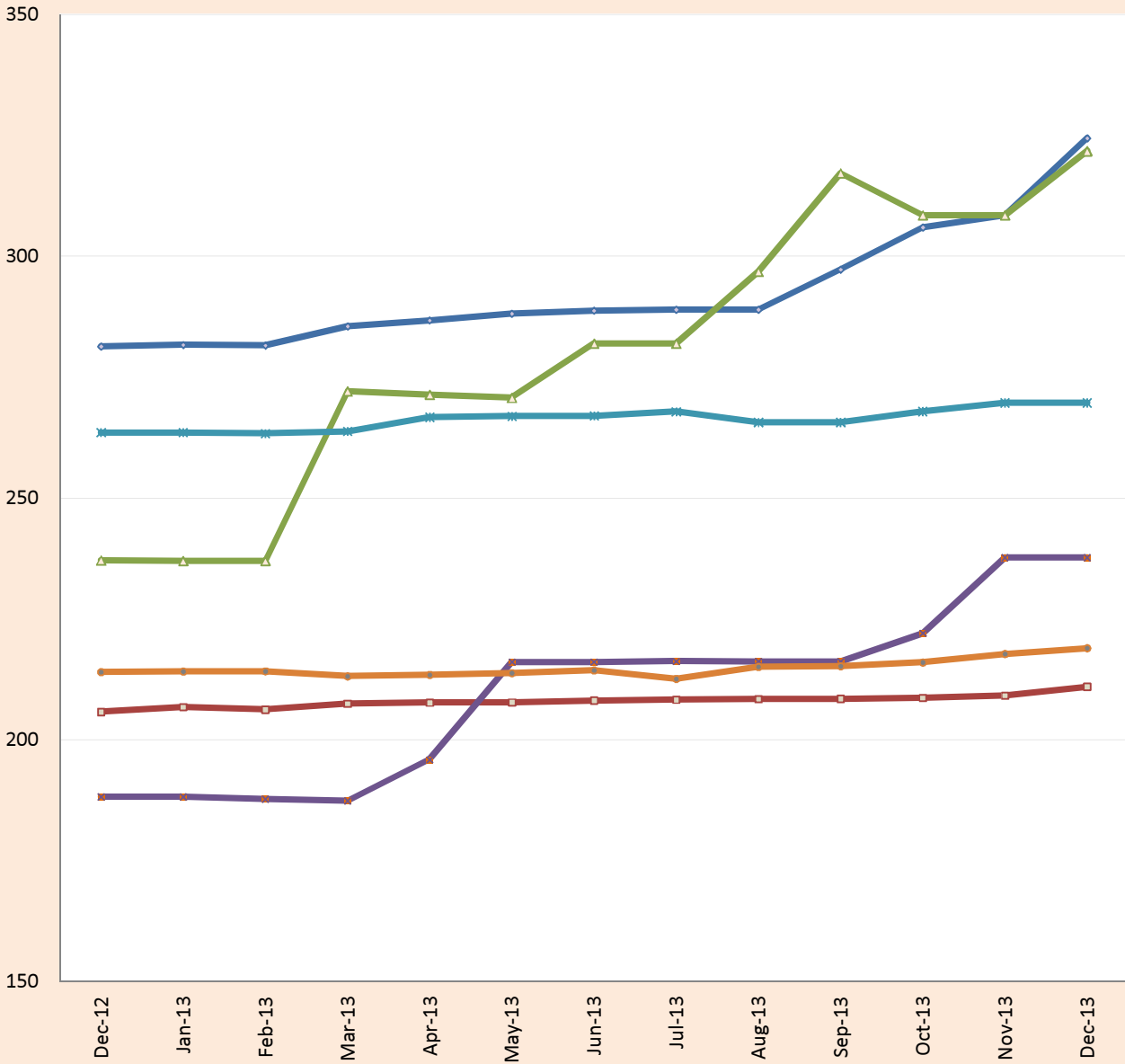
Table 8: Manufacturing Producer Price Index (Sept 2006=100) for December 2012 - December 2013

contd.

Year / Month	Manufacture of electrical machinery and apparatus n.e.c.	Manufacture of insulated wire and cable	Manufacture of motor vehicles, trailers and semi-trailers	Manufacture of bodies for motor vehicles, trailers and semi-trailers	Manufacture of furniture; manufacturing n.e.c.	Manufacture of furniture	Manufacturing n.e.c.
<i>ISIC</i>	D31	<i>D313</i>	D34	<i>D342</i>	D36	<i>D361</i>	<i>D369</i>
<i>weight</i>	0.41	<i>0.41</i>	0.05	<i>0.05</i>	2.44	<i>2.33</i>	<i>0.11</i>
2009 average	115.3	115.3	191.5	191.5	167.6	167.9	155.6
2010 average	138.8	138.8	185.2	185.2	192.2	192.5	185.7
2011 average	168.8	168.8	213.1	213.1	221.0	220.0	256.4
2012 average	199.2	199.2	227.4	227.4	253.5	252.3	293.2
2013 average	200.4	200.4	261.2	261.2	321.5	320.0	374.2
December-2012	208.2	208.2	233.0	233.0	267.0	266.0	299.7
January-2013	208.2	208.2	243.3	243.3	267.2	266.2	299.7
February-2013	208.2	208.2	245.8	245.8	267.7	266.6	303.1
March-2013	208.2	208.2	241.6	241.6	307.5	307.7	302.6
April-2013	208.2	208.2	243.0	243.0	314.1	313.5	334.4
May-2013	195.7	195.7	246.9	246.9	321.0	318.9	398.4
June-2013	195.7	195.7	253.8	253.8	321.3	319.1	400.1
July-2013	196.6	196.6	263.2	263.2	340.3	338.6	400.1
August-2013	196.6	196.6	265.9	265.9	340.4	338.6	401.7
September-2013	196.6	196.6	271.4	271.4	340.4	338.6	401.7
October-2013	196.6	196.6	279.5	279.5	345.6	343.7	416.1
November-2013	196.7	196.7	285.0	285.0	345.9	343.9	416.1
December-2013	p 196.7	p 196.7	p 295.0	p 295.0	p 346.1	p 344.2	p 416.1

p: provisional

PPI for Selected Subgroups in the Manufacturing Sector (Sept.2006=100)



- ◆ Manufacture of food products and beverages
- Manufacture of wood and articles of straw etc.
- ▲ Manufacture of coke, refined petroleum products etc.
- Manufacture of chemicals and chemical products
- ✕ Manufacture of other non-metallic min. products
- Manufacture of basic metals

Ghana Statistical Service (GSS)

Table 9: Manufacturing: Yearly Change Rates for December 2012 - December 2013 (%)

Year / Month	Manufacturing	Manufacture of food products and beverages	Production, processing, preservation of meat, fish, fruit, vegetables, oils and fats	Manufacture of dairy products	Manufacture of grain mill products, starch products, and prepared animal feeds	Manufacture of other food products	Manufacture of beverages	Manufacture of textiles	Spinning, weaving and finishing of textiles
ISIC	D	D15	D151	D152	D153	D154	D155	D17	D171
weight	100	25.64	4.60	4.31	4.66	4.80	7.27	4.27	4.28
2009 average	12.7	21.1	24.1	17.9	8.4	11.0	31.5	18.0	18.0
2010 average	13.3	16.7	-0.9	20.3	4.5	22.9	33.0	8.4	8.4
2011 average	13.7	12.1	13.4	11.6	22.9	17.7	3.8	25.9	25.9
2012 average	18.5	17.1	26.9	12.0	15.4	3.0	26.5	39.9	39.9
2013 average	13.0	13.1	11.1	15.5	4.4	23.0	14.5	16.2	16.2
December-2012	19.3	19.4	11.4	18.2	12.8	29.4	26.1	40.1	40.1
January-2013	12.8	17.3	7.1	14.7	10.5	29.8	26.1	34.3	34.3
February-2013	11.4	16.0	5.9	14.7	5.8	27.4	26.3	28.2	28.2
March-2013	14.1	17.0	5.6	19.1	4.0	25.9	27.5	33.1	33.1
April-2013	14.4	16.6	2.8	19.1	4.0	27.0	27.3	33.1	33.1
May-2013	12.8	17.0	0.6	21.7	4.0	29.6	26.3	24.0	24.0
June-2013	10.6	13.1	-0.5	21.7	4.0	31.2	11.7	3.8	3.8
July-2013	10.9	11.1	0.0	15.6	4.0	28.8	10.8	3.8	3.8
August-2013	10.8	7.1	1.0	15.6	1.6	9.8	4.6	3.8	3.8
September-2013	13.3	7.9	16.5	15.6	-2.6	14.2	0.3	7.6	7.6
October-2013	13.3	8.7	25.1	4.3	5.8	15.2	4.3	7.6	7.6
November-2013	14.5	9.7	31.1	3.9	5.8	19.0	4.3	7.6	7.6
December-2013	p 17.4	p 15.3	p 38.3	p 20.1	p 5.8	p 18.0	p 4.3	p 7.6	p 7.6

p: provisional

Table 9: Manufacturing Producer Price Index Yearly Change Rates for December 2012 - December 2013 (%)

contd.

Year / Month	Tanning of leather; manu facture of luggage, etc	Manufacture of footwear	Manufacture of wood an of articles of straw etc.	Sawmilling and planing of wood	Manufacture of products of wood, cork, straw etc.	Manufacture of paper and paper products	Manufacture of paper and paper products	Publishing, printing and reproduction of rec. media	Publishing	Printing and service activities ...
ISIC	D19	D192	D20	D201	D202	D21	D210	D22	D221	D222
weight	0.12	0.12	9.03	4.94	4.10	0.62	0.62	1.14	0.40	0.74
2009 average	35.9	35.9	45.1	59.0	18.9	10.6	10.6	69.2	37.6	93.7
2010 average	10.8	10.8	-5.2	-13.2	15.9	11.8	11.8	22.0	34.6	14.8
2011 average	1.1	1.1	5.8	2.5	16.9	28.9	28.9	22.2	32.7	17.0
2012 average	9.6	9.6	6.1	4.9	9.0	1.4	1.4	30.4	31.6	30.4
2013 average	16.3	16.3	1.4	-1.0	8.3	14.4	14.4	20.2	24.1	18.9
December-2012	13.7	13.7	4.4	3.7	5.9	1.8	1.8	37.3	54.5	28.8
January-2013	15.1	15.1	4.2	2.0	9.5	1.9	1.9	29.2	44.4	21.6
February-2013	15.9	15.9	1.1	-1.8	9.4	1.8	1.8	26.9	44.4	18.3
March-2013	20.9	20.9	1.6	-1.7	11.3	9.3	9.3	32.0	44.4	25.7
April-2013	22.3	22.3	1.4	-1.6	10.0	12.1	12.1	22.8	38.1	15.2
May-2013	21.1	21.1	1.2	-1.4	9.2	16.5	16.5	20.8	38.1	12.3
June-2013	18.3	18.3	1.3	-1.4	9.7	25.2	25.2	20.8	38.1	12.3
July-2013	18.3	18.3	0.2	-2.0	6.3	20.6	20.6	21.9	41.7	12.3
August-2013	16.8	16.8	0.0	-2.0	5.7	21.0	21.0	8.8	2.6	12.3
September-2013	11.4	11.4	0.0	-2.0	5.6	17.7	17.7	10.3	2.6	14.7
October-2013	11.4	11.4	1.4	-0.2	5.9	15.9	15.9	18.4	-1.9	31.1
November-2013	10.2	10.2	1.6	-0.2	6.9	15.8	15.8	15.1	-1.9	25.6
December-2013	p 13.4	p 13.4	p 2.5	-p 0.2	p 10.6	p 15.4	p 15.4	p 15.1	-p 1.9	p 25.6

p: provisional

Table 9: Manufacturing: Yearly Change Rates for December 2012 - December 2013 (%)

contd.

Year / Month	Manufacture of coke, refined petroleum products etc.	Manufacture of refined petroleum products	Manufacture of chemicals and chemical products	Manufacture of basic chemicals	Manufacture of other chemical products	Manufacture of man-made fibres	Manufacture of rubber and plastics products	Manufacture of rubber products	Manufacture of plastics products
<i>ISIC</i>	D23	D232	D24	D241	D242	D243	D25	D251	D252
<i>weight</i>	22.94	22.94	10.15	0.54	9.45	0.16	3.90	0.76	3.14
2009 average	-6.7	-6.7	7.5	19.9	7.4	0.0	24.1	45.1	20.3
2010 average	24.4	24.4	0.3	18.0	0.0	0.0	7.5	6.4	8.2
2011 average	26.4	26.4	8.0	7.7	8.1	0.0	12.7	31.2	9.4
2012 average	17.9	17.9	12.8	6.6	13.1	0.0	13.0	-1.6	16.7
2013 average	18.8	18.8	15.3	3.5	15.7	0.0	11.6	-3.8	15.4
December-2012	16.4	16.4	13.0	3.6	13.3	0.0	13.7	0.6	17.0
January-2013	-1.3	-1.3	10.4	3.6	10.7	0.0	15.3	8.9	16.7
February-2013	-1.4	-1.4	9.9	3.6	10.2	0.0	14.5	5.6	16.6
March-2013	12.5	12.5	9.7	4.2	10.0	0.0	13.9	-0.2	17.3
April-2013	12.2	12.2	13.1	0.6	13.5	0.0	15.5	-5.1	20.7
May-2013	11.7	11.7	15.1	0.6	15.6	0.0	4.2	-12.3	8.3
June-2013	19.3	19.3	7.9	0.6	8.1	0.0	3.8	-12.3	7.8
July-2013	18.5	18.5	16.8	5.9	17.3	0.0	4.3	-9.8	7.8
August-2013	24.7	24.7	15.1	4.5	15.5	0.0	4.8	-7.7	7.8
September-2013	33.6	33.6	14.9	4.6	15.3	0.0	14.3	-6.5	19.7
October-2013	30.0	30.0	18.0	4.7	18.5	0.0	16.2	-2.9	21.1
November-2013	30.1	30.1	26.3	4.7	27.1	0.0	15.8	-2.1	20.4
December-2013	p 35.7	p 35.7	p 26.3	p 4.9	p 27.1	p 0.0	p 16.2	-p 1.1	p 20.5

p: provisional

Table 9: Manufacturing: Yearly Change Rates for December 2012 - December 2013 (%)
contd.

Year / Month	Manufacture of other non-metallic min. products	Manufacture of non-metallic mineral products n.e.c.	Manufacture of basic metals	Manufacture of basic iron and steel	Manufacture of basic precious and non-ferrous metals	Manufacture of fabricated metal products, ...	Manufacture of structural metal products, tanks, reservoirs ...	Manufacture of other fabricated metal products ...	Manufacture of machinery ... n.e.c.	Manufacture of special-purpose machinery
ISIC	D26	D269	D27	D271	D272	D28	D281	D289	D29	D292
weight	8.20	8.20	5.02	2.02	2.65	3.70	1.55	2.15	0.42	0.42
2009 average	29.8	29.8	9.0	5.6	11.3	20.4	21.4	19.6	37.8	37.8
2010 average	6.0	6.0	8.7	5.4	12.9	17.5	23.0	13.6	30.6	30.6
2011 average	4.0	4.0	11.6	24.8	4.9	2.0	2.0	1.8	24.8	24.8
2012 average	33.2	33.2	14.2	12.1	12.5	18.2	24.2	13.7	14.1	14.1
2013 average	9.0	9.0	5.0	2.4	7.1	11.4	12.8	10.7	38.0	38.0
December-2012	35.9	35.9	17.2	12.3	21.1	21.7	22.2	21.6	0.0	0.0
January-2013	31.0	31.0	11.6	2.1	19.3	19.9	18.8	21.1	0.0	0.0
February-2013	26.8	26.8	10.3	2.1	17.0	18.0	15.8	20.1	0.0	0.0
March-2013	14.0	14.0	9.6	4.1	13.9	12.6	14.9	11.2	0.0	0.0
April-2013	14.9	14.9	9.4	4.1	13.7	13.2	14.7	12.4	0.0	0.0
May-2013	10.9	10.9	4.9	-5.0	13.1	8.2	5.8	10.6	0.0	0.0
June-2013	1.6	1.6	2.4	2.0	2.7	6.3	5.6	7.3	0.0	0.0
July-2013	1.4	1.4	1.5	0.9	1.9	10.3	14.7	7.7	76.0	76.0
August-2013	0.6	0.6	2.6	3.6	1.9	9.8	13.7	7.6	76.0	76.0
September-2013	0.6	0.6	2.6	3.6	1.9	10.6	15.0	7.6	76.0	76.0
October-2013	1.7	1.7	0.8	3.7	-1.3	8.7	11.4	6.8	76.0	76.0
November-2013	2.3	2.3	1.8	3.9	0.2	8.9	11.4	7.1	76.0	76.0
December-2013	p 2.3	p 2.3	p 2.3	p 4.0	p 1.0	p 10.4	p 11.9	p 9.2	p 76.0	p 76.0

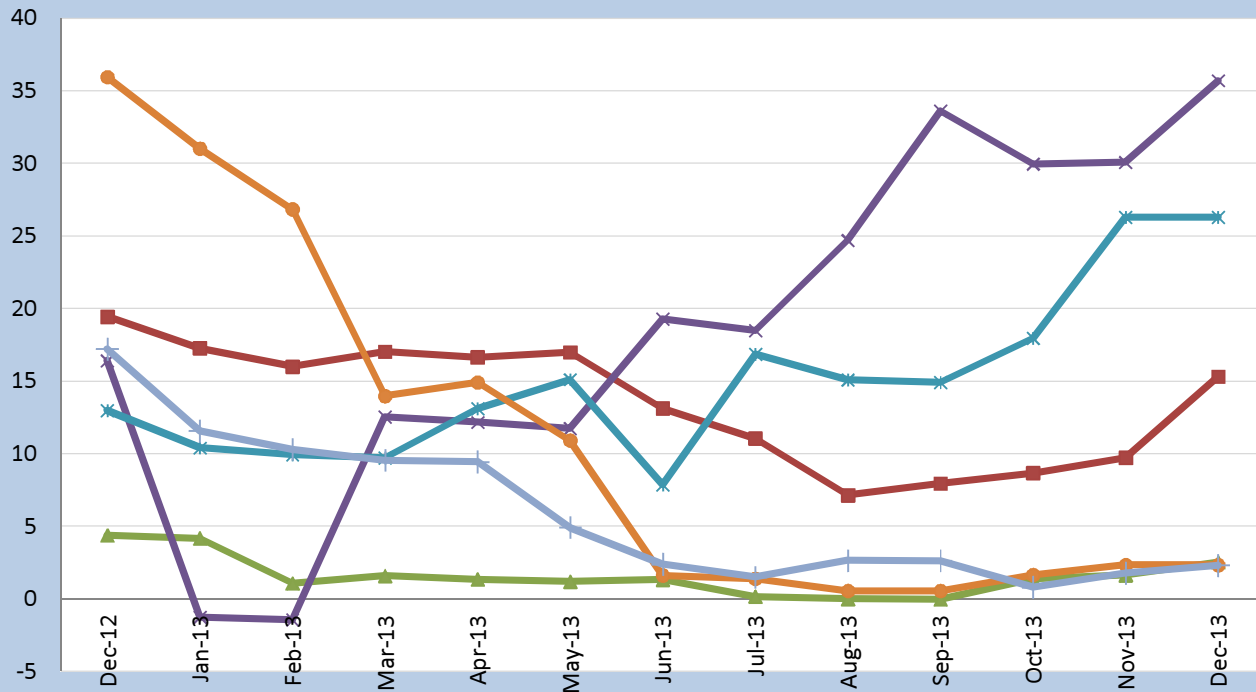
p: provisional

Table 9: Manufacturing: Yearly Change Rates for December 2012 - December 2013 (%)
contd.

Year / Month	Manufacture of electrical machinery and apparatus n.e.c.	Manufacture of insulated wire and cable	Manufacture of motor vehicles, trailers and semi-trailers	Manufacture of bodies for motor vehicles, trailers and semi-trailers	Manufacture of furniture; manufacturing n.e.c.	Manufacture of furniture	Manufacturing n.e.c.
<i>ISIC</i>	D31	<i>D313</i>	D34	<i>D342</i>	D36	<i>D361</i>	<i>D369</i>
<i>weight</i>	0.41	<i>0.41</i>	0.05	<i>0.05</i>	2.44	<i>2.33</i>	<i>0.11</i>
2009 average	5.5	5.5	25.9	25.9	11.3	11.4	8.7
2010 average	20.2	20.2	-2.5	-2.5	15.0	14.9	19.3
2011 average	22.7	22.7	15.6	15.6	14.9	14.3	38.0
2012 average	18.1	18.1	6.8	6.8	14.8	14.8	14.8
2013 average	1.0	1.0	14.8	14.8	26.6	26.6	27.4
December-2012	11.4	11.4	12.5	12.5	12.3	12.4	10.1
January-2013	11.4	11.4	17.7	17.7	13.2	13.4	7.5
February-2013	11.4	11.4	14.4	14.4	11.0	11.2	5.2
March-2013	11.4	11.4	10.6	10.6	27.0	27.8	4.5
April-2013	11.4	11.4	7.6	7.6	28.5	29.0	13.4
May-2013	-0.7	-0.7	6.7	6.7	29.4	29.3	35.1
June-2013	-0.1	-0.1	9.0	9.0	24.9	24.6	35.7
July-2013	-5.6	-5.6	14.3	14.3	32.2	32.1	35.7
August-2013	-5.6	-5.6	15.8	15.8	31.5	31.4	35.9
September-2013	-5.6	-5.6	15.3	15.3	29.3	29.1	35.9
October-2013	-5.6	-5.6	17.9	17.9	31.5	31.2	40.8
November-2013	-5.5	-5.5	22.2	22.2	31.6	31.3	40.8
December-2013	-p 5.5	-p 5.5	p 26.6	p 26.6	p 29.6	p 29.4	p 38.8

p: provisional

PPI Inflation for selected subgroups in the Manufacturing Sector (Year-on-year change rates in %)



- Manufacture of food products and beverages
- ▲ Manufacture of wood and articles of straw etc.
- ✕ Manufacture of coke, refined petroleum products etc.
- ✕ Manufacture of chemicals and chemical products
- ◆ Manufacture of other non-metallic min. products
- + Manufacture of basic metals

Ghana Statistical Service (GSS)

Table 10: Manufacturing: Monthly Change Rates for December 2012 - December 2013 (%)

Year / Month	Manufacturing	Manufacture of food products and beverages	Production, processing, preservation of meat, fish, fruit, vegetables, oils and fats	Manufacture of dairy products	Manufacture of grain mill products, starch products, and prepared animal feeds	Manufacture of other food products	Manufacture of beverages	Manufacture of textiles	Spinning, weaving and finishing of textiles
<i>ISIC</i>	<i>D</i>	<i>D15</i>	<i>D151</i>	<i>D152</i>	<i>D153</i>	<i>D154</i>	<i>D155</i>	<i>D17</i>	<i>D171</i>
<i>weight</i>	100	25.64	4.60	4.31	4.66	4.80	7.27	4.27	4.28
2009 average	2.1	1.7	1.7	2.6	-0.8	1.3	2.3	1.6	1.6
2010 average	0.4	0.8	-0.1	0.7	0.6	1.9	1.6	1.0	1.0
2011 average	1.2	1.1	1.5	0.8	2.3	-0.8	1.5	1.9	1.9
2012 average	1.5	1.5	0.9	1.5	1.0	2.3	2.0	3.0	3.0
2013 average	1.4	1.2	2.8	1.6	0.5	1.4	0.4	0.6	0.6
December-2012	0.0	0.0	-1.5	0.0	0.0	2.5	0.0	0.0	0.0
January-2013	0.1	0.1	0.9	0.0	0.0	-0.2	0.0	0.0	0.0
February-2013	0.0	0.0	2.1	0.0	-0.9	-1.7	0.0	0.0	0.0
March-2013	4.3	1.4	2.4	3.9	-1.7	-0.2	0.9	3.8	3.8
April-2013	0.9	0.4	-0.4	0.0	0.0	4.5	0.0	0.0	0.0
May-2013	1.0	0.5	0.8	0.0	0.0	3.4	0.0	0.0	0.0
June-2013	1.1	0.2	1.8	0.0	0.0	1.8	-0.9	0.0	0.0
July-2013	0.4	0.1	0.7	0.0	0.0	-0.9	0.2	0.0	0.0
August-2013	1.1	0.0	-0.8	0.0	0.0	1.1	0.0	0.0	0.0
September-2013	2.9	2.9	16.5	0.0	0.0	4.6	0.0	3.7	3.7
October-2013	0.8	2.9	2.4	0.0	8.6	0.1	4.1	0.0	0.0
November-2013	1.1	0.8	3.6	0.0	0.0	2.7	0.0	0.0	0.0
December-2013	p 2.5	p 5.1	p 3.9	p 15.6	p 0.0	p 1.6	p 0.0	p 0.0	p 0.0

p: provisional

Table 10: Manufacturing: Monthly Change Rates for December 2012 - December 2013 (%)

contd.

Year / Month	Tanning of leather; manu facture of luggage, etc	Manufacture of footwear	Manufacture of wood an of articles of straw etc.	Sawmilling and planing of wood	Manufacture of products of wood, cork, straw etc.	Manufacture of paper and paper products	Manufacture of paper and paper products	Publishing, printing and reproduction of rec. media	Publishing	Printing and service activities ...
ISIC	D19	D192	D20	D201	D202	D21	D210	D22	D221	D222
weight	0.12	0.12	9.03	4.94	4.10	0.62	0.62	1.14	0.40	0.74
2009 average	0.2	0.2	-0.9	-0.7	2.2	0.1	0.1	7.4	3.8	10.1
2010 average	1.1	1.1	-0.1	-0.8	0.8	1.7	1.7	-0.5	0.0	-0.9
2011 average	0.5	0.5	0.6	0.3	1.4	1.5	1.5	2.1	3.0	1.7
2012 average	1.1	1.1	0.4	0.3	0.5	0.2	0.2	2.7	4.1	2.2
2013 average	1.1	1.1	0.2	0.0	0.8	1.2	1.2	1.2	-0.1	2.0
December-2012	0.0	0.0	0.0	0.0	0.0	0.3	0.3	0.0	0.0	0.0
January-2013	1.3	1.3	0.5	0.0	1.8	0.0	0.0	0.0	0.0	0.0
February-2013	-3.2	-3.2	-0.3	0.0	-0.9	0.0	0.0	0.0	0.0	0.0
March-2013	3.9	3.9	0.6	0.1	1.9	7.4	7.4	4.0	0.0	6.3
April-2013	1.2	1.2	0.1	0.1	0.0	2.6	2.6	0.0	0.0	0.0
May-2013	-0.5	-0.5	0.0	-0.4	1.4	0.0	0.0	0.0	0.0	0.0
June-2013	1.8	1.8	0.2	0.0	0.7	7.5	7.5	0.0	0.0	0.0
July-2013	0.0	0.0	0.1	0.0	0.3	0.0	0.0	0.9	2.6	0.0
August-2013	0.0	0.0	0.1	0.0	0.2	0.0	0.0	0.0	0.0	0.0
September-2013	2.6	2.6	0.0	0.0	0.1	-2.7	-2.7	2.2	0.0	3.4
October-2013	0.0	0.0	0.1	0.0	0.3	0.0	0.0	7.3	-4.4	14.3
November-2013	2.9	2.9	0.2	0.0	0.9	0.1	0.1	0.0	0.0	0.0
December-2013	p 2.9	p 2.9	p 0.9	p 0.0	p 3.4	p 0.1	p 0.1	p 0.0	p 0.0	p 0.0

p: provisional

Table 10: Manufacturing: Monthly Change Rates for December 2012 - December 2013 (%)
contd.

Year / Month	Manufacture of coke, refined petroleum products etc.	Manufacture of refined petroleum products	Manufacture of chemicals and chemical products	Manufacture of basic chemicals	Manufacture of other chemical products	Manufacture of man-made fibres	Manufacture of rubber and plastics products	Manufacture of rubber products	Manufacture of plastics products
ISIC	D23	D232	D24	D241	D242	D243	D25	D251	D252
weight	22.94	22.94	10.15	0.54	9.45	0.16	3.90	0.76	3.14
2009 average	4.6	4.6	0.2	2.7	0.2	0.0	2.5	10.3	1.4
2010 average	0.0	0.0	-0.1	0.0	-0.1	0.0	0.2	-0.3	0.5
2011 average	2.1	2.1	1.1	1.0	1.1	0.0	1.0	0.9	1.1
2012 average	1.4	1.4	1.1	0.3	1.1	0.0	1.1	0.1	1.4
2013 average	2.7	2.7	2.0	0.4	2.1	0.0	1.3	-0.1	1.6
December-2012	0.0	0.0	0.0	0.0	0.0	0.0	0.0	0.3	0.0
January-2013	0.0	0.0	0.0	0.0	0.0	0.0	0.5	2.7	0.0
February-2013	0.0	0.0	-0.3	0.0	-0.3	0.0	0.2	1.0	0.0
March-2013	14.8	14.8	-0.2	0.6	-0.2	0.0	0.7	1.0	0.7
April-2013	-0.3	-0.3	4.6	0.0	4.7	0.0	4.2	-0.2	5.3
May-2013	-0.2	-0.2	10.3	0.0	10.6	0.0	-0.9	-5.7	0.2
June-2013	4.1	4.1	0.0	0.0	0.0	0.0	0.6	-0.1	0.8
July-2013	0.0	0.0	0.1	5.3	0.0	0.0	0.2	0.9	0.0
August-2013	5.3	5.3	0.0	-1.3	0.0	0.0	-0.8	-4.3	0.0
September-2013	6.9	6.9	0.0	0.1	0.0	0.0	8.8	-0.6	11.0
October-2013	-2.7	-2.7	2.7	0.1	2.8	0.0	1.4	2.4	1.2
November-2013	0.0	0.0	7.1	0.1	7.3	0.0	0.2	0.6	0.2
December-2013	p 4.3	p 4.3	p 0.0	p 0.1	p 0.0	p 0.0	p 0.3	p 1.4	p 0.1

p: provisional

Table 10: Manufacturing: Monthly Change Rates for December 2012 - December 2013 (%)
contd.

Year / Month	Manufacture of other non-metallic min. products	Manufacture of non-metallic mineral products n.e.c.	Manufacture of basic metals	Manufacture of basic iron and steel	Manufacture of basic precious and non-ferrous metals	Manufacture of fabricated metal products, ...	Manufacture of structural metal products, tanks, reservoirs ...	Manufacture of other fabricated metal products ...	Manufacture of machinery ... n.e.c.	Manufacture of special-purpose machinery
<i>ISIC</i>	D26	D269	D27	D271	D272	D28	D281	D289	D29	D292
<i>weight</i>	8.20	8.20	5.02	2.02	2.65	3.70	1.55	2.15	0.42	0.42
2009 average	2.1	2.1	-0.2	-0.6	0.1	2.0	2.7	1.4	3.8	3.8
2010 average	0.1	0.1	1.5	3.1	1.7	0.0	-0.1	0.1	0.0	0.0
2011 average	0.7	0.7	0.5	-0.2	0.2	0.8	1.5	0.4	3.2	3.2
2012 average	2.7	2.7	1.3	1.1	1.6	1.7	1.7	1.7	0.0	0.0
2013 average	0.2	0.2	0.2	0.3	0.1	0.8	1.0	0.7	6.3	6.3
December-2012	0.0	0.0	0.0	0.0	0.0	-0.2	-0.5	0.0	0.0	0.0
January-2013	0.0	0.0	0.0	0.0	0.1	0.2	0.0	0.4	0.0	0.0
February-2013	-0.1	-0.1	0.0	0.0	0.0	0.0	-0.1	0.1	0.0	0.0
March-2013	0.2	0.2	-0.5	2.0	-2.3	-0.6	0.0	-1.1	0.0	0.0
April-2013	1.1	1.1	0.1	0.0	0.2	1.5	2.0	1.1	0.0	0.0
May-2013	0.1	0.1	0.2	0.0	0.3	-0.2	-0.4	-0.1	0.0	0.0
June-2013	0.0	0.0	0.3	0.0	0.5	0.1	-0.2	0.3	0.0	0.0
July-2013	0.3	0.3	-0.8	-1.1	-0.6	3.8	8.7	0.3	76.0	76.0
August-2013	-0.8	-0.8	1.2	2.6	0.1	0.1	0.0	0.1	0.0	0.0
September-2013	0.0	0.0	0.1	0.0	0.1	1.8	1.1	2.3	0.0	0.0
October-2013	0.8	0.8	0.4	0.1	0.6	2.1	0.5	3.4	0.0	0.0
November-2013	0.7	0.7	0.8	0.2	1.3	0.1	0.0	0.2	0.0	0.0
December-2013	p 0.0	p 0.0	p 0.5	p 0.1	p 0.9	p 1.1	p 0.0	p 1.9	p 0.0	p 0.0

p: provisional

Table 10: Manufacturing: Monthly Change Rates for December 2012 - December 2013 (%)

contd.

Year / Month	Manufacture of electrical machinery and apparatus n.e.c.	Manufacture of insulated wire and cable	Manufacture of motor vehicles, trailers and semi-trailers	Manufacture of bodies for motor vehicles, trailers and semi-trailers	Manufacture of furniture; manufacturing n.e.c.	Manufacture of furniture	Manufacturing n.e.c.
<i>ISIC</i>	D31	<i>D313</i>	D34	<i>D342</i>	D36	<i>D361</i>	<i>D369</i>
<i>weight</i>	0.41	0.41	0.05	0.05	2.44	2.33	0.11
2009 average	0.6	0.6	2.1	2.1	1.3	1.4	0.2
2010 average	2.0	2.0	0.1	0.1	0.2	0.2	1.7
2011 average	2.3	2.3	0.2	0.2	2.0	1.9	3.4
2012 average	0.9	0.9	1.0	1.0	1.0	1.0	0.8
2013 average	-0.5	-0.5	2.0	2.0	2.3	2.3	2.9
December-2012	0.0	0.0	-0.1	-0.1	1.6	1.6	1.4
January-2013	0.0	0.0	4.5	4.5	0.1	0.1	0.0
February-2013	0.0	0.0	1.0	1.0	0.2	0.2	1.1
March-2013	0.0	0.0	-1.7	-1.7	14.9	15.4	-0.1
April-2013	0.0	0.0	0.6	0.6	2.1	1.9	10.5
May-2013	-6.0	-6.0	1.6	1.6	2.2	1.7	19.1
June-2013	0.0	0.0	2.8	2.8	0.1	0.1	0.4
July-2013	0.5	0.5	3.7	3.7	5.9	6.1	0.0
August-2013	0.0	0.0	1.0	1.0	0.0	0.0	0.4
September-2013	0.0	0.0	2.1	2.1	0.0	0.0	0.0
October-2013	0.0	0.0	3.0	3.0	1.5	1.5	3.6
November-2013	0.0	0.0	2.0	2.0	0.1	0.1	0.0
December-2013	p 0.0	p 0.0	p 3.5	p 3.5	p 0.1	p 0.1	p 0.0

p: provisional

Table 11: Utilities: Producer Price Index (Sept 2006=100) for December 2012 -December 2013

Year / Month	Electricity and water supply (Utilities)	Electricity supply	Production, transmission and distribution of electricity	Water supply	Collection, purification and distribution of water
ISIC	E	E40	E401	E41	E410
weight	100.00	93.25	93.25	6.75	6.75
2009 average	159.4	157.2	157.2	193.0	193.0
2010 average	226.0	227.6	227.6	208.6	208.6
2011 average	281.3	285.8	285.8	225.1	225.1
2012 average	301.8	306.8	306.8	238.6	238.6
2013 average					
December-2012	303.1	308.3	308.3	238.6	238.6
January-2013	303.2	308.3	308.3	238.6	238.6
February-2013	303.2	308.3	308.3	238.6	238.6
March-2013	303.2	308.4	308.4	238.6	238.6
April-2013	303.3	308.5	308.5	238.6	238.6
May-2013	303.5	308.6	308.6	238.6	238.6
June-2013	303.7	308.8	308.8	238.6	238.6
July-2013	303.7	308.9	308.9	238.6	238.6
August-2013	303.7	308.9	308.9	238.6	238.6
September-2013	303.8	309.0	309.0	238.6	238.6
October-2013	426.1	430.9	430.9	362.7	362.7
November-2013	426.8	431.7	431.7	362.7	362.7
December-2013	p 427.3	p 432.3	p 432.3	p 362.7	p 362.7

p: provisional

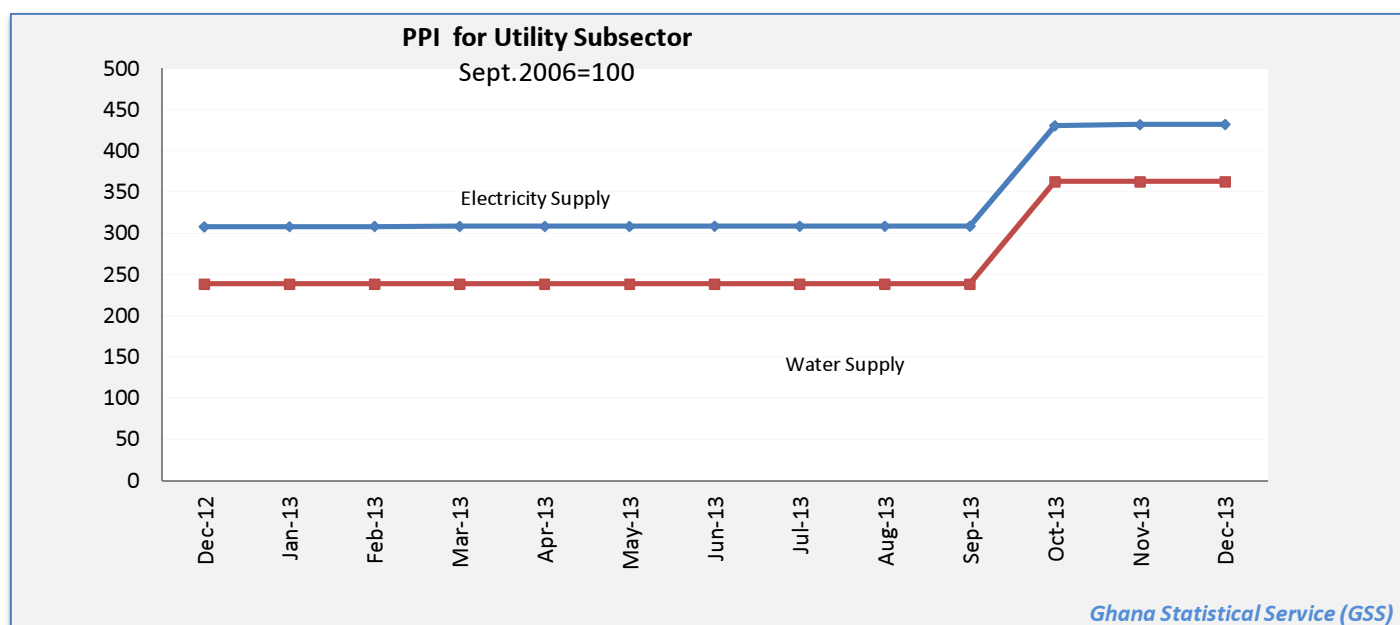


Table 12: Utilities: Yearly Change Rates for December 2012 - December 2013 (%)

Year / Month	Electricity and water supply (Utilities)	Electricity supply	Production, transmission and distribution of electricity	Water supply	Collection, purification and distribution of water
<i>ISIC</i>	<i>E</i>	<i>E40</i>	<i>E401</i>	<i>E41</i>	<i>E410</i>
<i>weight</i>	100.00	93.25	93.25	6.75	6.75
2009 average	1.4	1.6	1.6	0.0	0.0
2010 average	41.7	44.7	44.7	8.1	8.1
2011 average	32.7	34.8	34.8	8.2	8.2
2012 average	7.4	7.5	7.5	6.1	6.1
2013 average	10.7	10.5	10.5	13.0	13.0
December-2012	1.5	1.5	1.5	0.5	0.5
January-2013	1.2	1.3	1.3	0.0	0.0
February-2013	1.1	1.1	1.1	0.0	0.0
March-2013	1.0	1.1	1.1	0.0	0.0
April-2013	1.0	1.1	1.1	0.0	0.0
May-2013	0.5	0.5	0.5	0.0	0.0
June-2013	0.6	0.6	0.6	0.0	0.0
July-2013	0.2	0.2	0.2	0.0	0.0
August-2013	0.2	0.2	0.2	0.0	0.0
September-2013	0.2	0.2	0.2	0.0	0.0
October-2013	40.5	39.7	39.7	52.0	52.0
November-2013	40.8	40.1	40.1	52.0	52.0
December-2013	p 41.0	p 40.2	p 40.2	p 52.0	p 52.0

p: provisional

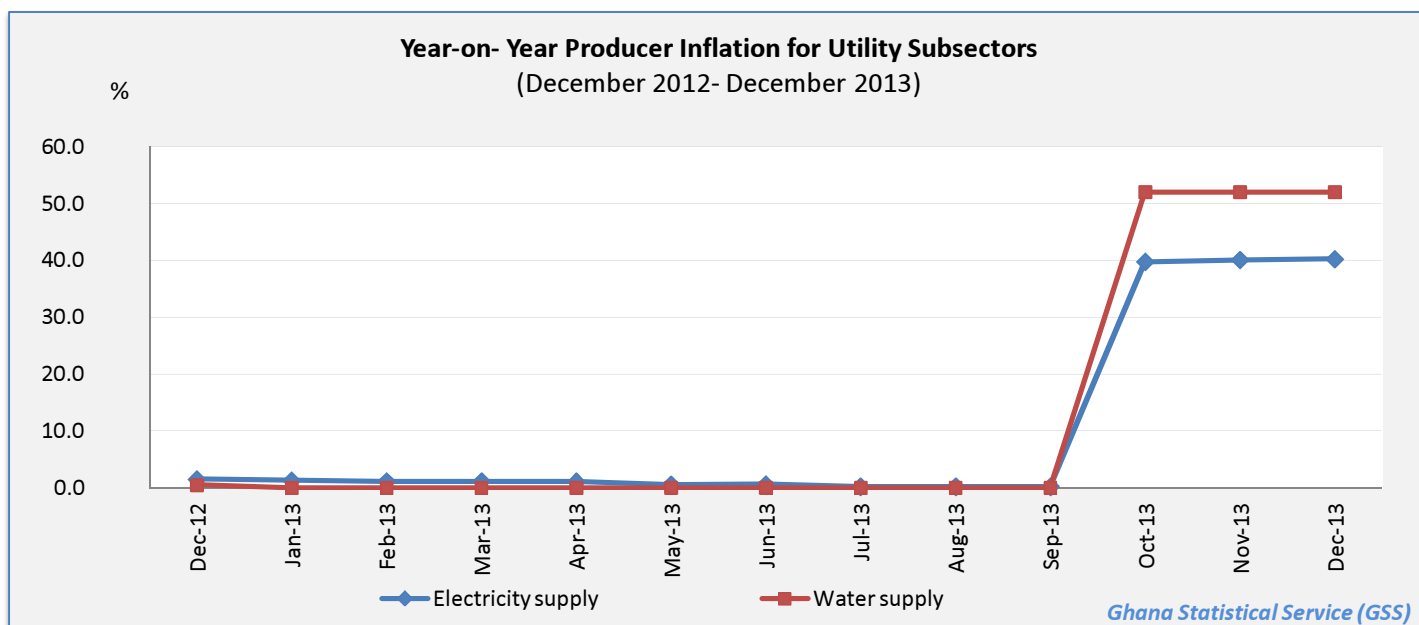


Table 13: Utilities: Monthly Change Rates for December 2012 - December 2013 (%)

Year / Month	Electricity and water supply (Utilities)	Electricity supply	Production, transmission and distribution of electricity	Water supply	Collection, purification and distribution of water
<i>ISIC</i>	<i>E</i>	<i>E40</i>	<i>E401</i>	<i>E41</i>	<i>E410</i>
<i>weight</i>	100.00	93.25	93.25	6.75	6.75
2009 average	0.1	0.1	0.1	0.0	0.0
2010 average	6.0	6.4	6.4	1.2	1.2
2011 average	0.7	0.8	0.8	0.7	0.7
2012 average	0.1	0.1	0.1	0.0	0.0
2013 average	3.4	3.3	3.3	4.3	4.3
December-2012	0.0	0.0	0.0	0.0	0.0
January-2013	0.0	0.0	0.0	0.0	0.0
February-2013	0.0	0.0	0.0	0.0	0.0
March-2013	0.0	0.0	0.0	0.0	0.0
April-2013	0.0	0.0	0.0	0.0	0.0
May-2013	0.0	0.0	0.0	0.0	0.0
June-2013	0.1	0.1	0.1	0.0	0.0
July-2013	0.0	0.0	0.0	0.0	0.0
August-2013	0.0	0.0	0.0	0.0	0.0
September-2013	0.0	0.0	0.0	0.0	0.0
October-2013	40.3	39.5	39.5	52.0	52.0
November-2013	0.2	0.2	0.2	0.0	0.0
December-2013	p 0.1	p 0.1	p 0.1	p 0.0	p 0.0

p: provisional

